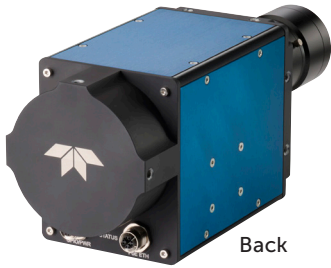


Kaleido™ SWIR Hyperspectral Camera



Front



Back

High Speed, High Spatial Resolution

With 1280 pixels of spatial resolution and line rates exceeding 2,300 Hz, our new Kaleido series of hyperspectral cameras enable more inspection in less time. The camera has integrated both sensor and spectrograph into one unit, while providing customers lens choice optionality.

Camera setup is made easy with spectral band selection, aberration correction by the spectrograph and spectral calibration between units.

SPECIFICATIONS

Item	Detail	Unit	Specification
SPECTRAL INFORMATION	Wavelength Range	nm	950-1750
	# of Bands	-	220
SAMPLING/PIXEL	Spectral	nm	3.5
RESOLUTION	Spatial (FOV)	# of Pixels	1280
	Spectral (FWHM)	nm	7
PIXEL SIZE	-	µm	14
PIXEL FORMAT	Bit Depth	bits	12, 12 packed
LINE RATE	Max bands, 12bp	Hz	2,300+
	32 bands, 12bp	Hz	15,000
DYNAMIC RANGE	Typical	dB	61
READ NOISE	Typical	e-	120
FULL-WELL CAPACITY	Typical	e-	120k
SPECTRAL CALIBRATION ACCURACY	-	pixels	<1
TEMPERATURE CONTROL	In-camera	-	TEC
SENSOR MATERIAL	-	-	InGaAs
SLIT WIDTH	-	µm	28
ROI	Selection	Multiple ROI Camera speed scales proportionally	

KEY FEATURES

- In-Line Inspection
- High Speed
 - 2,300 Hz (full range)
- Spatial Resolution:
 - 1280 pixels
- Spectral Resolution:
 - 3.5 nm/band
- Wavelength Selection:
 - Up to 220 bands
- Minimal Keystone/Smile

TYPICAL APPLICATIONS

- Food Inspection
- Recycling and Waste Sorting
- Pharmaceuticals
- Chemical Composition
- Precision Agriculture
- Wood Inspection
- Moisture Measurement

