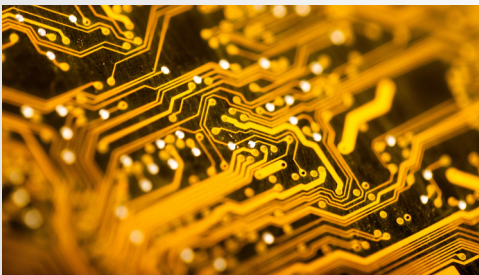


# Lens onnect<sup>®</sup> SERIES

**Motorized** FA lens that can be operated **easily**  
with a single **USB** cable



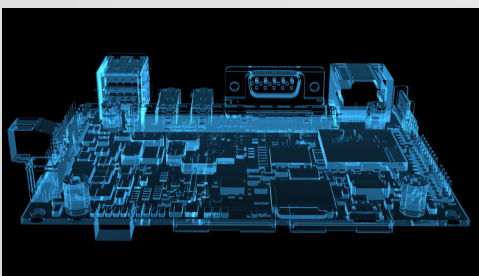
Remote adjustment in out-of-reach places and inside



Precise adjustments that don't rely on feeling by-hand



Changing the focus point and changeover  
for workpieces at different heights



Perfect for embedded systems

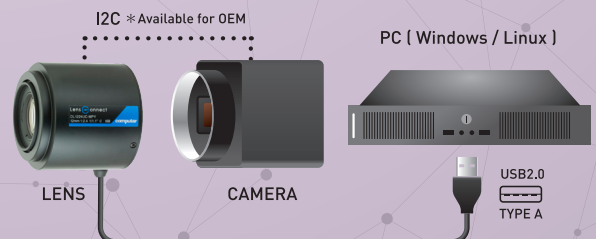
- Focus, Iris, and Zoom can be controlled via USB
- Easy operation in areas where manual adjustment is not possible
- The stepping motor makes precise control possible
- Plug-and-play for easy deployment

BH series



RF series

Connection  
example



# LENS CONNECT series | LINE UP

## BH series

DL0828UC-MPY	
Focal Length	8mm
F-number	F2.8 - F16.0
Working Distance	0.1m - Inf
Angle of View (1/1.1")	69.4° x 53.8° (D 80.4°)
Mount	C
Sensor size	1/1.1"
Resolution	12MP
Filter size	M52 P=0.75mm
Dimensions	φ 59.5mm x 63.3mm
Weight	178g

DL1224UC-MPY	
Focal Length	12mm
F-number	F2.4 - F16.0
Working Distance	0.1m - Inf
Angle of View (1/1.1")	50.5° x 38.1° (D 60.2°)
Mount	C
Sensor size	1/1.1"
Resolution	12MP
Filter size	M35.5 x P0.5mm
Dimensions	φ 59.5mm x 57.9mm
Weight	163g

DL1623UC-MPY	
Focal Length	16mm
F-number	F2.3 - F16.0
Working Distance	0.11m - Inf
Angle of View (1/1.1")	38.9° x 29.0° (D 47.0°)
Mount	C
Sensor size	1/1.1"
Resolution	12MP
Filter size	M35.5 x P0.5mm
Dimensions	φ 59.5mm x 59.2mm
Weight	173g

DL2523UC-MPY	
Focal Length	25mm
F-number	F2.3 - F16.0
Working Distance	0.12m - Inf
Angle of View (1/1.1")	253° x 18.7° (D 31.0°)
Mount	C
Sensor size	1/1.1"
Resolution	12MP
Filter size	M30.5 x P0.5mm
Dimensions	φ 59.5mm x 56.9mm
Weight	166g

DL3525UC-MPY	
Focal Length	35mm
F-number	F2.5 - F16.0
Working Distance	0.16m - Inf
Angle of View (1/1.1")	18.2° x 13.4° (D 22.5°)
Mount	C
Sensor size	1/1.1"
Resolution	12MP
Filter size	M30.5 x P0.5mm
Dimensions	φ 59.5mm x 57.9mm
Weight	160g

DL5028UC-MPY	
Focal Length	50mm
F-number	F2.8 - F16.0
Working Distance	0.2m - Inf
Angle of View (1/1.1")	13.2° x 9.7° (D 16.3°)
Mount	C
Sensor size	1/1.1"
Resolution	12MP
Filter size	M30.5 x P0.5mm
Dimensions	φ 59.5mm x 58mm
Weight	173g

VL6Z1626UC-MPYIR	
Focal Length	16mm - 96mm
F-number	F2.6 - F16C
Working Distance	3m - Inf
Angle of View (1.1")	Wide 48.1° x 35.6° (D 58.9°) Tele 8.5° x 6.3° (D 10.4°)
Mount	C
Sensor size	1.1"
Resolution	12MP
Filter size	M67xP0.75
Dimensions	78.2mm x 83.8 x 108.96mm
Weight	330g

EL6Z0915UCS-MPWIR	
Focal Length	9mm - 50mm
F-number	F1.5 - F16C
Working Distance	3m - Inf
Angle of View (1/1.8")	Wide 46.1° x 26.3° (D 52.5°) Tele 9.0° x 5.2° (D 10.2°)
Mount	CS
Sensor size	1/1.8"
Resolution	5MP
Filter size	*M67xP0.75 (With VM0918)
Dimensions	78.2mm x 83.8 x 104.8mm
Weight	299g

EL3Z0416UCS-MPWIR	
Focal Length	4.0mm - 10mm
F-number	F1.6 - F16C
Working Distance	0.2m - Inf
Angle of View (1/1.8")	Wide 115.9° x 61.7° (D 138.1°) Tele 46.0° x 25.8° (D 52.9°)
Mount	CS
Sensor size	1/1.8"
Resolution	5MP
Filter size	*M55 x P0.75 (With VM0418)
Dimensions	φ 66mm x 59mm
Weight	161g

(\*) There is no filter mount on the top of the lens!  
For using filters, please attach VM0918.

(\*) There is no filter mount on the top of the lens!  
For using filters, please attach VM0418.

## RF series

VL0826U-MPZ	
Focal Length	8mm
F-number	F2.6 - F16.0
Working Distance	0.1m - Inf
Angle of View (1")	76.9° x 61.5° (D 88.8°)
Mount	C
Sensor size	1"
Resolution	20MP
Filter size	*M82 x P0.75mm (With ZM0810)
Dimensions	φ 78mm x 52.93mm
Weight	334g

VL1226U-MPZ	
Focal Length	12mm
F-number	F2.6 - F16.0
Working Distance	0.1m - Inf
Angle of View (1")	56.7° x 44.1° (D 67.4°)
Mount	C
Sensor size	1"
Resolution	20MP
Filter size	M46 x P0.75mm
Dimensions	φ 75mm x 48.5mm
Weight	273g

VL1624U-MPZ	
Focal Length	16mm
F-number	F2.6 - F16.0
Working Distance	0.1m - Inf
Angle of View (1")	43.8° x 33.6° (D 53.2°)
Mount	C
Sensor size	1"
Resolution	20MP
Filter size	M43 x P0.75mm
Dimensions	φ 75mm x 52mm
Weight	280g

(\*) There is no filter mount on the top of the lens!  
For using filters, please attach ZM0810.

VL2520U-MPZ	
Focal Length	25mm
F-number	F2.6 - F16.0
Working Distance	0.15m - Inf
Angle of View (1")	28.8° x 21.8° (D 35.5°)
Mount	C
Sensor size	1"
Resolution	20MP
Filter size	M46 x P0.75mm
Dimensions	φ 78mm x 47mm
Weight	257g

VL3522U-MPZ	
Focal Length	35mm
F-number	F2.2 - F16.0
Working Distance	0.2m - Inf
Angle of View (1")	20.8° x 15.7° (D 25.8°)
Mount	C
Sensor size	1"
Resolution	20MP
Filter size	M43 x P0.75mm
Dimensions	φ 75mm x 66.1mm
Weight	313g

VL5024U-MPZ	
Focal Length	50mm
F-number	F2.4 - F16.0
Working Distance	0.2m - Inf
Angle of View (1")	14.6° x 11.0° (D 18.2°)
Mount	C
Sensor size	1"
Resolution	20MP
Filter size	M43 x P0.75mm
Dimensions	φ 75mm x 66.5mm
Weight	326g

VL7531U-MPZ	
Focal Length	75mm
F-number	F3.1 - F16
Working Distance	0.25m - Inf
Angle of View (1")	9.8° x 7.3° (D 12.2°)
Mount	C
Sensor size	1"
Resolution	20MP
Filter size	M43 x P0.75mm
Dimensions	φ 75mm x 87mm
Weight	TBD



<https://www.computar-global.com/product/bh/>



<https://www.computar-global.com/product/rf/>

Specification is subject to change without any notice.



CBC (Europe) GmbH  
Fritz-Vornfelde-Str. 6  
40547 Düsseldorf

<https://www.computar-global.com/info@cbc-europe.com>