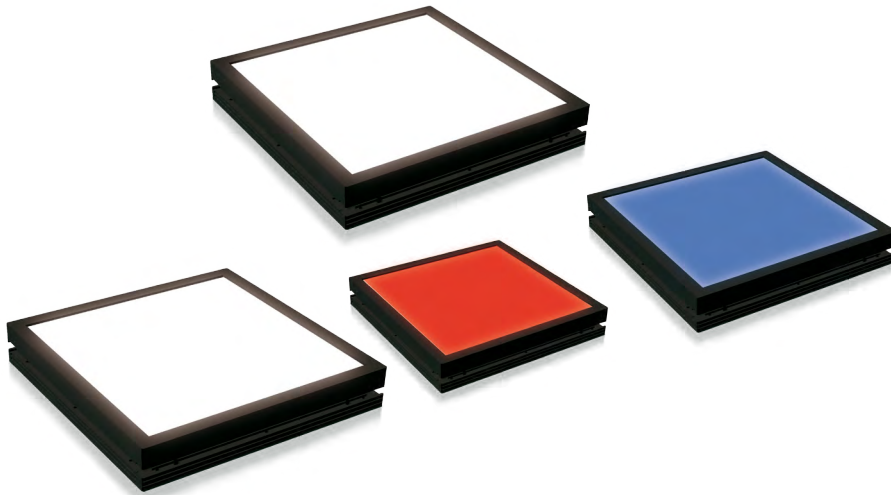


Introduction



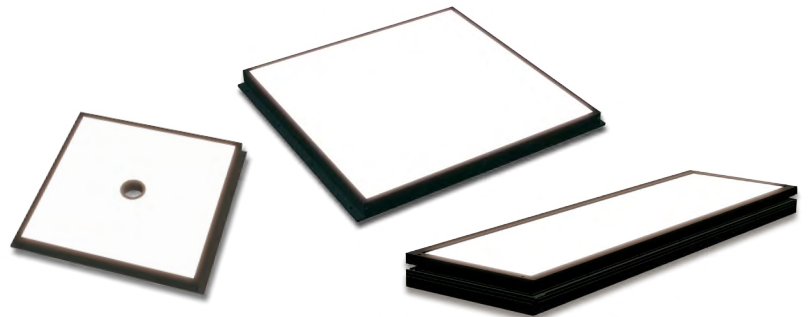
As of today, the all-new TH2 Series is available at CCS.

The new TH2 Series achieves higher intensity than its predecessor. It also expands on the previous lineup, by adding new larger sized models and models with camera holes.

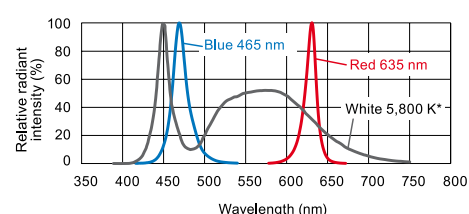
With the TH2 Series, we would like to introduce the TH2-PM Series. Unlike the diffused output of the standard TH2, the TH2-PM will have an output with high directivity. This makes the TH2-PM Series ideal for measurements or outline inspections of work pieces.

Main features

- Increased intensity
- Expanded lineup:
 - TH2-PM series for high directivity
 - Large sized back lights
 - Models with camera holes



Common Specifications (TH2 Series)

Cable length	300 mm	Spectral distribution	
Case material	Aluminum alloy, Resin		
Cooling method	Natural air-cooling		
Operation environment	Temperature: 0 to 40°C, Humidity: 20 to 85%RH (with no condensation)		
Storage environment	Temperature: -20 to 60°C, Humidity: 20 to 85%RH (with no condensation)		
CE marking	Safety standard: Conforms to EN62471		
Environmental regulations	RoHS compliant		

* The correlated color temperature is the same as that of conventional products TH series.
Value for the Light Unit: 5,800 K (used for TH2 series)
Value for individual LEDs: 6,600 K (used for TH series)

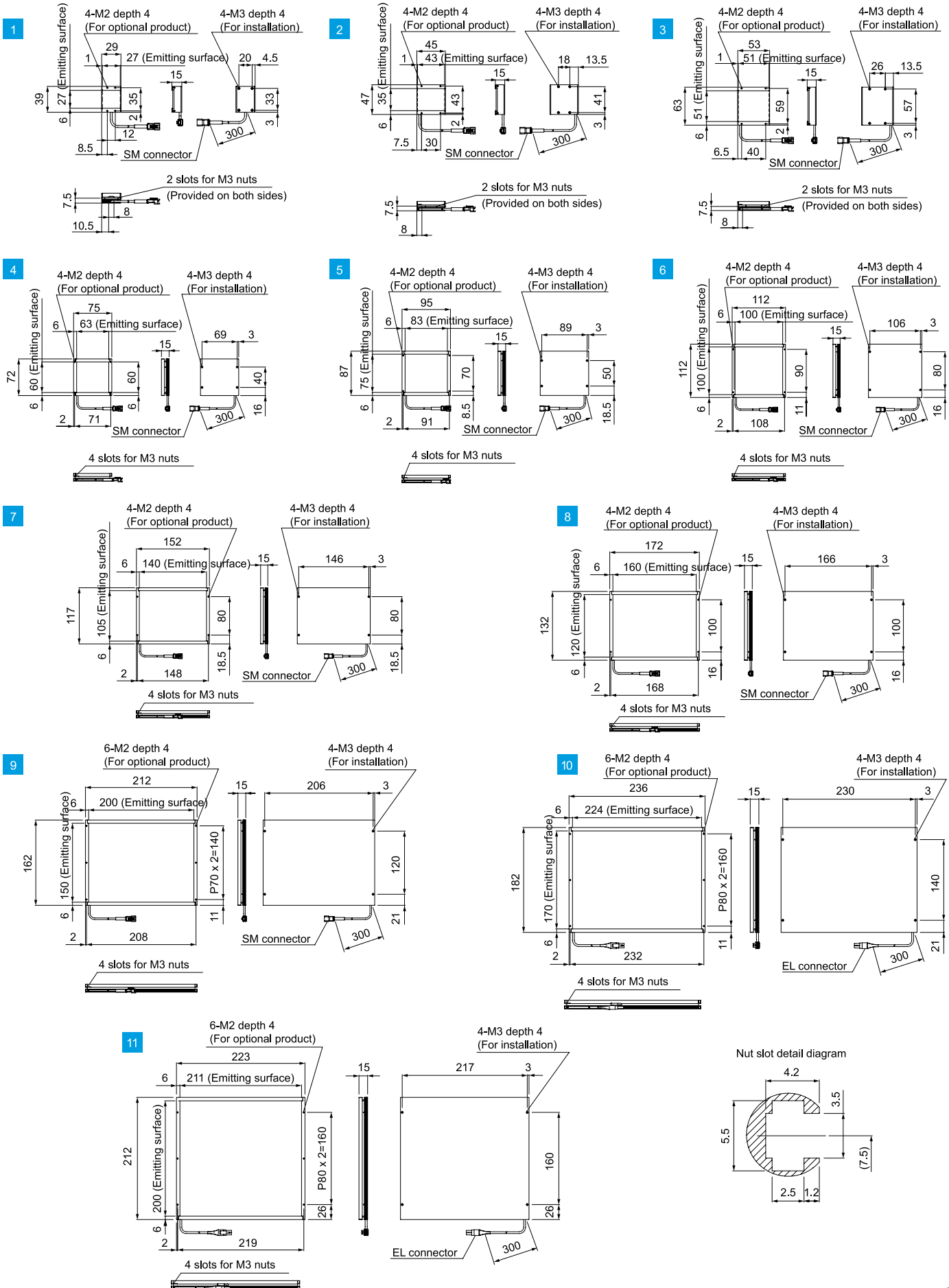
Lineup (TH2 Series)

Model name	LED color	Power consumption	Peak wavelength/ correlated color temperature*	Options	Extension cables	Recommended Control Units	Weight	Drawing number				
TH2-27X27RD	Red	24 V / 2.3 W	635 nm	Light Control Film Bracket	FCB* Straight Cable <small>* The cables with a model name that ends with "-ME7" or "-EL2" are not included.</small>	PD3 POD CC-ST-1024 PSB	30 g	1				
TH2-27X27SW	White	24 V / 2.9 W	5,800 K									
TH2-27X27BL	Blue	24 V / 2.7 W	465 nm									
TH2-43X35RD	Red	24 V / 4.9 W	635 nm									
TH2-43X35SW	White	24 V / 4.8 W	5,800 K									
TH2-43X35BL	Blue	24 V / 4.8 W	465 nm									
TH2-51X51RD	Red	24 V / 6.5 W	635 nm									
TH2-51X51SW	White	24 V / 8.2 W	5,800 K									
TH2-51X51BL	Blue	24 V / 8.2 W	465 nm									
TH2-63X60RD	Red	24 V / 9.9 W	635 nm									
TH2-63X60SW	White	24 V / 9.7 W	5,800 K									
TH2-63X60BL	Blue	24 V / 9.7 W	465 nm									
TH2-83X75RD	Red	24 V / 15 W	635 nm		FCB-W 2-branch Cable	PD3 POD PSB	140 g	5				
TH2-83X75SW	White	24 V / 16 W	5,800 K									
TH2-83X75BL	Blue	24 V / 16 W	465 nm									
TH2-100X100RD	Red	24 V / 26 W	635 nm				FCB-F 4-branch Cable	PD3 POD PSB	200 g	6		
TH2-100X100SW	White	24 V / 25 W	5,800 K									
TH2-100X100BL	Blue	24 V / 25 W	465 nm									
TH2-140X105RD	Red	24 V / 28 W	635 nm						FRCB Robot Cable	PD3 POD	260 g	7
TH2-140X105SW	White	24 V / 28 W	5,800 K									
TH2-140X105BL	Blue	24 V / 28 W	465 nm									
TH2-160X120RD	Red	24 V / 35 W	635 nm	310 g							8	
TH2-160X120SW	White	24 V / 35 W	5,800 K									
TH2-160X120BL	Blue	24 V / 35 W	465 nm	FCB-EL2 Straight Cable	PD3-10024-8 PSB3-30024	440 g	9					
TH2-200X150RD	Red	24 V / 45 W	635 nm									
TH2-200X150SW	White	24 V / 44 W	5,800 K									
TH2-200X150BL	Blue	24 V / 44 W	465 nm									
TH2-224X170RD	Red	24 V / 66 W	635 nm			FCB-W-EL2 2-branch Cable	540 g	10				
TH2-224X170SW	White	24 V / 66 W	5,800 K									
TH2-224X170BL	Blue	24 V / 66 W	465 nm									
TH2-211X200RD	Red	24 V / 67 W	635 nm									
TH2-211X200SW	White	24 V / 65 W	5,800 K									
TH2-211X200BL	Blue	24 V / 65 W	465 nm	580 g	11							

* The correlated color temperature is the same as that of conventional products TH series.
Value for the Light Unit: 5,800 K (used for TH2 series)
Value for individual LEDs: 6,600 K (used for TH series)

Dimensions (mm)

Note: Even for the Light Units of the same emitting surface size, the thickness and other dimensions of the product differ between the high-luminance and high-directivity type Light Units. Be sure to check the dimension diagrams before installing the Light Units.



Common Specifications (TH2-PM Series)

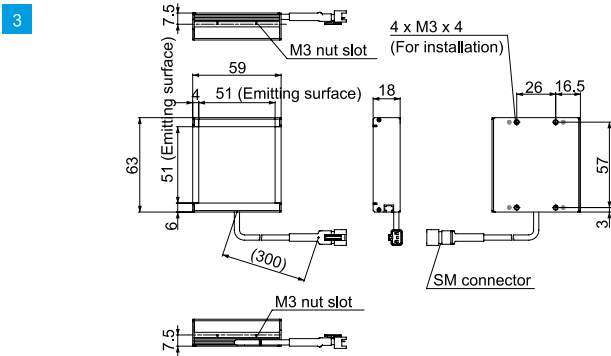
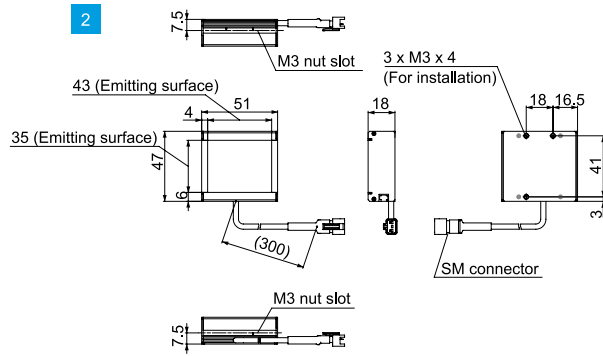
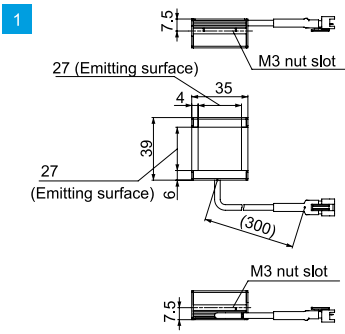
Cable length	300 mm	Spectral distribution	<p>The graph plots Relative radiant intensity (%) on the y-axis (0 to 100) against Wavelength (nm) on the x-axis (350 to 800). Three curves are shown: a blue curve peaking at 465 nm, a red curve peaking at 635 nm, and a white curve peaking at 5,300 K. The white curve shows a broad spectrum across the visible range.</p>
Case material	Aluminum alloy, Resin		
Cooling method	Natural air-cooling		
Operation environment	Temperature: 0 to 40°C, Humidity: 20 to 85%RH (with no condensation)		
Storage environment	Temperature: -20 to 60°C, Humidity: 20 to 85%RH (with no condensation)		
CE marking	Safety standard: Conforms to EN62471		
Environmental regulations	RoHS compliant		

Lineup (TH2-PM Series)

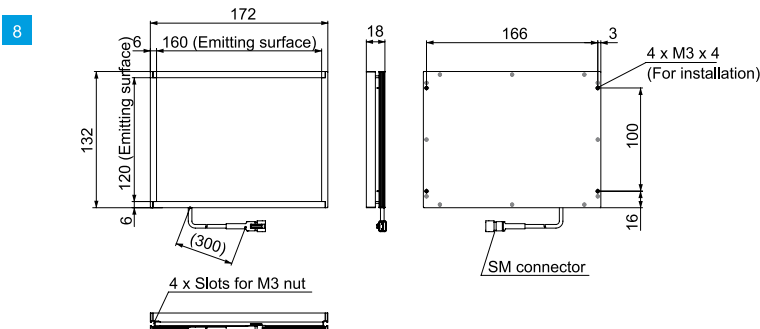
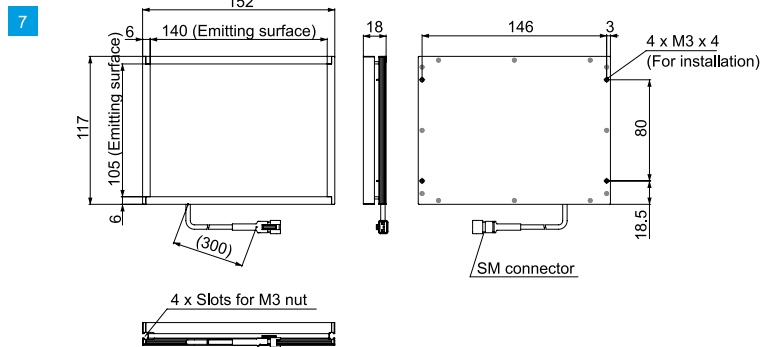
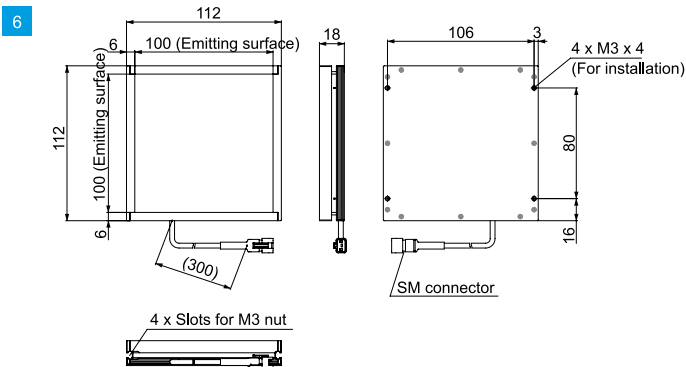
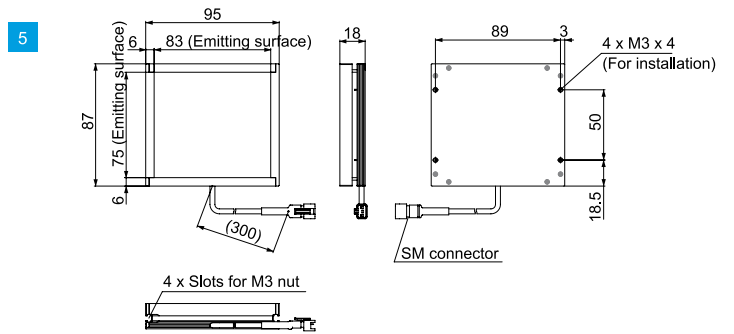
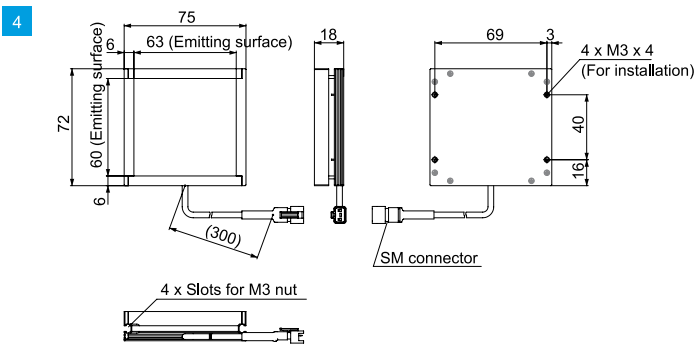
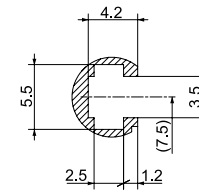
Model name	LED color	Power consumption	Peak wavelength/ correlated color temperature	Options	Extension cables	Recommended Control Units	Weight	Drawing number			
TH2-27X27RD-PM	Red	24 V / 2.5 W	635 nm	Bracket	FCB* Straight Cable <small>* The cables with a model name that ends with "-ME7" or "-EL2" are not included.</small>	PD3 POD CC-ST-1024 PSB	40 g	1			
TH2-27X27SW-PM	White	24 V / 3.1 W	5,300 K				60 g	2			
TH2-27X27BL-PM	Blue	24 V / 3.1 W	465 nm				80 g	3			
TH2-43X35RD-PM	Red	24 V / 5.7 W	635 nm				120 g	4			
TH2-43X35SW-PM	White	24 V / 5.5 W	5,300 K			FCB-W 2-branch Cable	PD3 POD PSB	170 g	5		
TH2-43X35BL-PM	Blue	24 V / 5.5 W	465 nm					240 g	6		
TH2-51X51RD-PM	Red	24 V / 7.3 W	635 nm					FCB-F 4-branch Cable	PD3 POD PSB	320 g	7
TH2-51X51SW-PM	White	24 V / 9.9 W	5,300 K							FRCB Robot Cable	PD3 POD
TH2-51X51BL-PM	Blue	24 V / 9.9 W	465 nm								
TH2-63X60RD-PM	Red	24 V / 9.9 W	635 nm								
TH2-63X60SW-PM	White	24 V / 9.7 W	5,300 K								
TH2-63X60BL-PM	Blue	24 V / 9.7 W	465 nm								
TH2-83X75RD-PM	Red	24 V / 15 W	635 nm								
TH2-83X75SW-PM	White	24 V / 16 W	5,300 K								
TH2-83X75BL-PM	Blue	24 V / 16 W	465 nm								
TH2-100X100RD-PM	Red	24 V / 26 W	635 nm								
TH2-100X100SW-PM	White	24 V / 25 W	5,300 K								
TH2-100X100BL-PM	Blue	24 V / 25 W	465 nm								
TH2-140X105RD-PM	Red	24 V / 28 W	635 nm								
TH2-140X105SW-PM	White	24 V / 28 W	5,300 K								
TH2-140X105BL-PM	Blue	24 V / 28 W	465 nm								
TH2-160X120RD-PM	Red	24 V / 34 W	635 nm								
TH2-160X120SW-PM	White	24 V / 35 W	5,300 K								
TH2-160X120BL-PM	Blue	24 V / 35 W	465 nm								

Dimensions (mm)

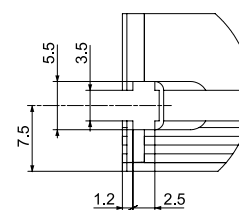
Note: Even for the Light Units of the same emitting surface size, the thickness and other dimensions of the product differ between the high-luminance and high-directivity type Light Units. Be sure to check the dimension diagrams before installing the Light Units.



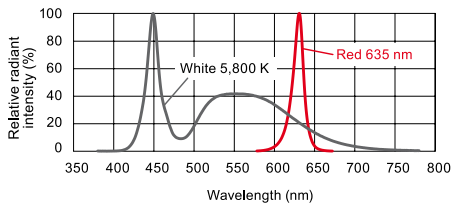
1 2 3 Nut slot detail diagram



4 5 6 7 8 Nut slot detail diagram



Common Specifications (TH2 Large size and Camera hole)

Cable length	300 mm	Spectral distribution	
Case material	Aluminum alloy, Resin		
Cooling method	Natural air-cooling		
Operation environment	Temperature: 0 to 40°C, Humidity: 20 to 85%RH (with no condensation)		
Storage environment	Temperature: -20 to 60°C, Humidity: 20 to 85%RH (with no condensation)		
CE marking	Safety standard: Conforms to EN62471		
Environmental regulations	RoHS compliant		

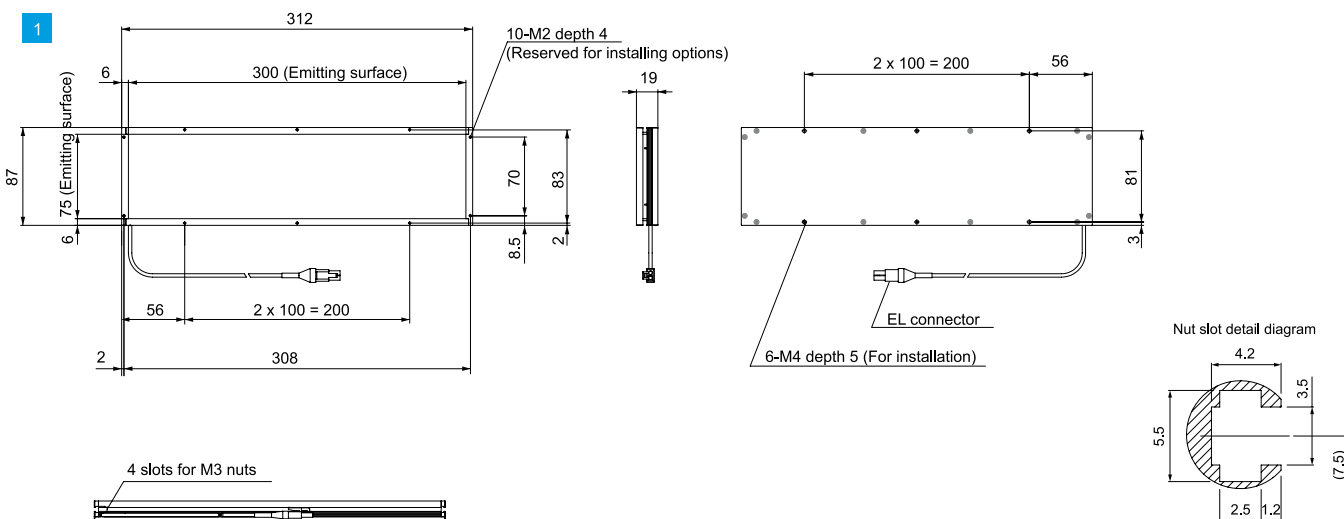
Lineup (TH2 Large size and Camera hole)

Model name	LED color	Power consumption	Peak wavelength/ correlated color temperature	Options	Extension cables	Recommended Control Units	Weight	Drawing number
TH2-300X75RD	Red	24 V / 54 W	635 nm	-	FCB-EL2 Straight Cable	PD3-10024-8	650 g	1
TH2-300X75SW	White	24 V / 68 W	5,800 K		FCB-W-EL2 2-branch Cable	PSB3-30024		

Model name	LED color	Power consumption	Peak wavelength/ correlated color temperature	Options	Extension cables	Recommended Control Units	Weight	Drawing number
TH2-300X300RD	Red	24 V / 85 W	635 nm	-	FCB-EL2 Straight Cable	PD3-10024-8	2,700 g	1
TH2-300X300SW	White	24 V / 86 W	5,800 K					
TH2-380X250RD	Red	24 V / 90 W	635 nm		FCB-W-EL2 2-branch Cable	PSB3-30024	2,900 g	2
TH2-380X250SW	White	24 V / 93 W	5,800 K					
TH2-400X400RD	Red	24 V / 130 W	635 nm		FCB-ME7 Straight Cable	PSB3-30024	5,400 g	3
TH2-400X400SW	White	24 V / 153 W	5,800 K					
TH2-500X500RD	Red	24 V / 202 W	635 nm				7,800 g	4
TH2-500X500SW	White	24 V / 239 W	5,800 K					

Model name	LED color	Power consumption	Peak wavelength/ correlated color temperature	Options	Extension cables	Recommended Control Units	Weight	Drawing number
TH2-150X150RD-CR35	Red	24 V / 30 W	635 nm	Bracket	FCB* Straight Cable <small>* The cables with a model name that ends with "-ME7" or "-EL2" are not included.</small>	PD3 POD	350 g	1
TH2-150X150SW-CR35	White	24 V / 30 W	5,800 K		FCB-W 2-branch Cable			
TH2-211X200RD-CR35	Red	24 V / 63 W	635 nm		FCB-F 4-branch Cable	PD3-10024-8 PSB3-30024	550 g	2
TH2-211X200SW-CR35	White	24 V / 62 W	5,800 K		FRCB Robot Cable			
TH2-300X300RD-CR35	Red	24 V / 83 W	635 nm		FCB-EL2 Straight Cable			
TH2-300X300SW-CR35	White	24 V / 84 W	5,800 K		FCB-W-EL2 2-branch Cable			

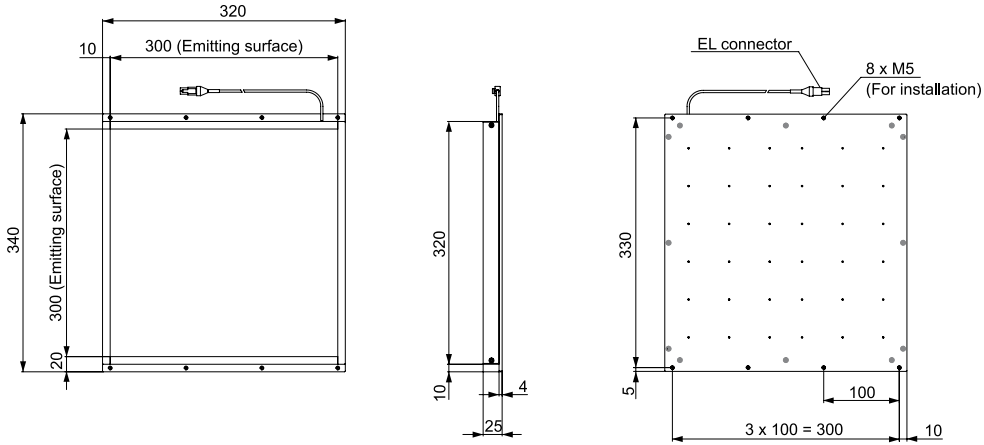
Dimensions (mm)



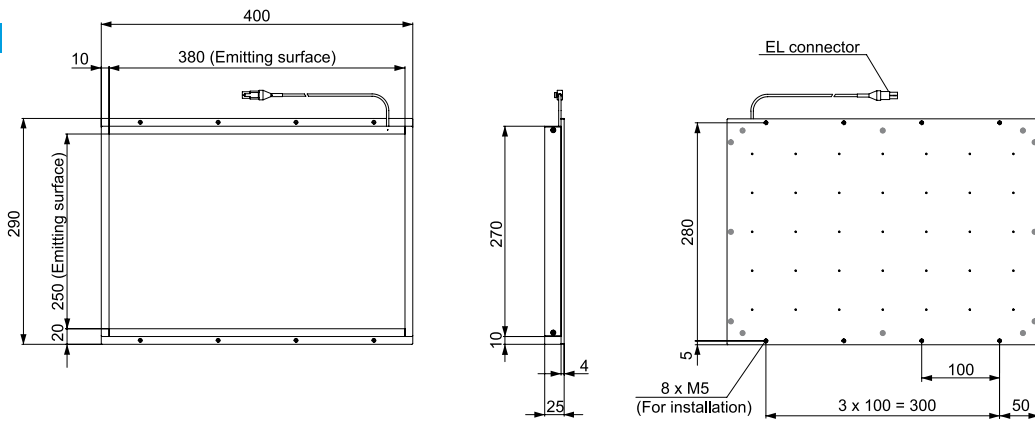
Dimensions (mm)

Note: Even for the Light Units of the same emitting surface size, the thickness and other dimensions of the product differ between the high-luminance and high-directivity type Light Units. Be sure to check the dimension diagrams before installing the Light Units.

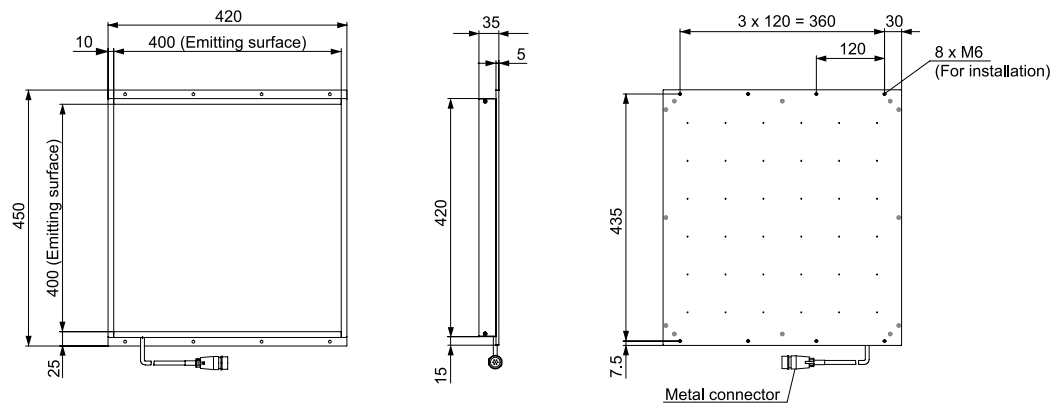
1



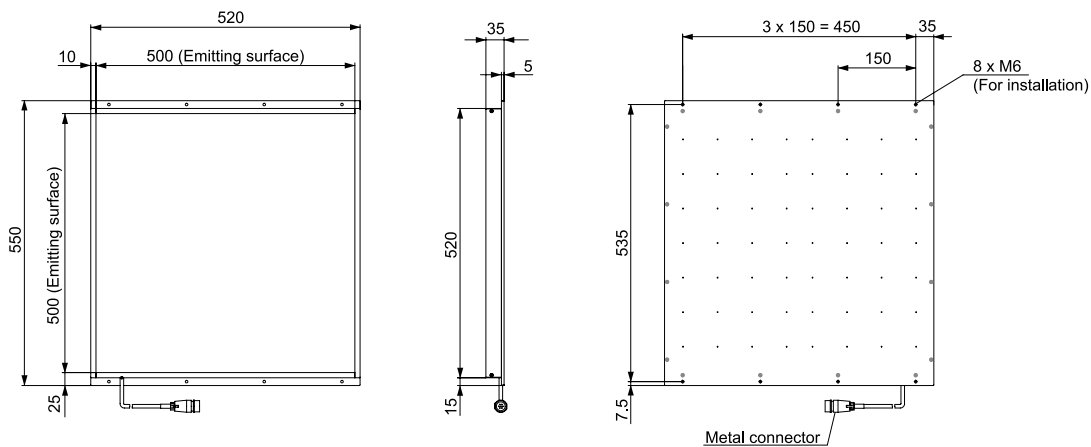
2



3



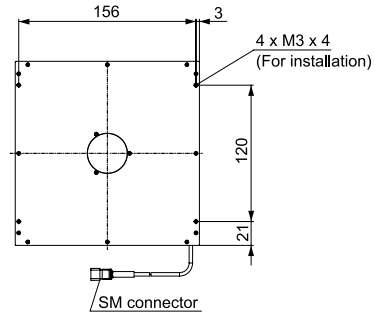
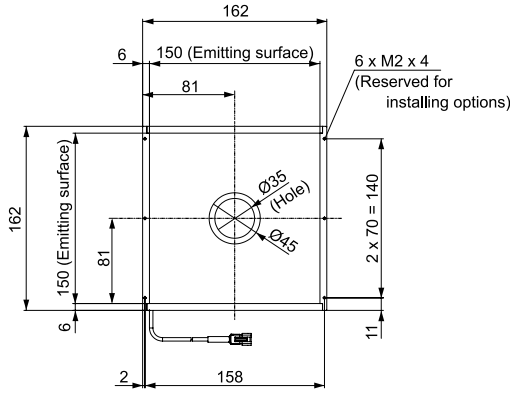
4



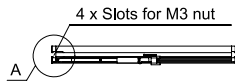
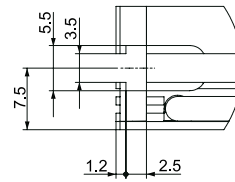
Dimensions (mm)

Note: Even for the Light Units of the same emitting surface size, the thickness and other dimensions of the product differ between the high-luminance and high-directivity type Light Units. Be sure to check the dimension diagrams before installing the Light Units.

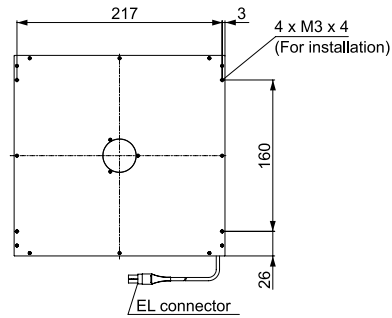
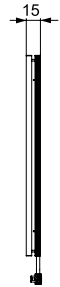
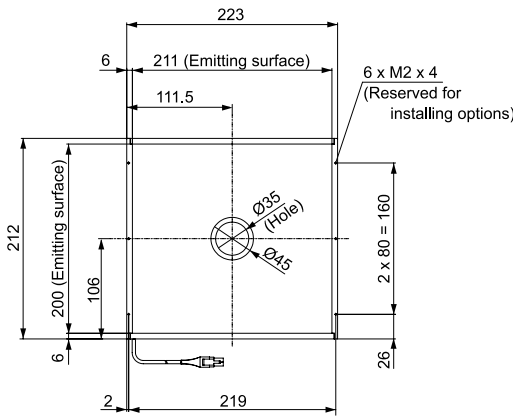
1



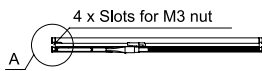
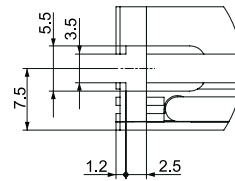
Nut slot detail diagram A



2



Nut slot detail diagram A



3

