



MACHINE VISION FOR Food & Beverage

Smart Cameras and Vision Systems from Teledyne DALSA

With the widest range of machine vision components in the industry, Teledyne DALSA serves a tremendous variety of applications in industrial settings and helps thousands of firms around the world find competitive advantage to succeed in their own widely varied industries.

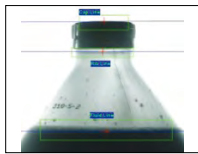
Your Benefit

Low Purchase & Operation Costs, High-Tech Products, Worldwide Availability, Leader in Machine Vision, Over 30 Years Expert Knowledge.

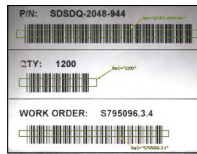
Your Benefit



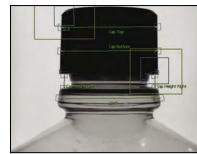
Seal Inspection



Fill Level Inspection



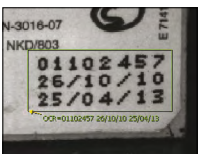
1D Code Reading



Bottle Cap Inspection



Label Inspection



LOT Code Inspection



Orientation



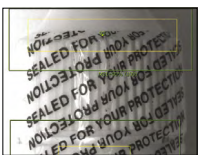
Print Inspection



Color Label Inspection



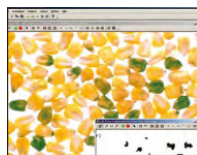
Color Label Inspection



Seal Inspection



OCR



Sorting



2D Code Reading



Verifying

Products & Software



BOA Spot Vision Sensor

640x480 to 1280x960, 1/3" Mono Global Shutter, CMOS, 640x480 also in color available, 30-45 fps, Pixel Size: 3.75 µm, M12 & C-Mount, IP67, Integrated Light, IP67, Gigabit Ethernet, Ethernet/IP, PROFINET, FTP, Modbus, RS-232, 0-50°C Operating, Dimensions: 61mm x 58mm x 57mm, 3 Inputs (1 Trigger, 2 general purpose/job select), 3 Outputs (general purpose), 12-30 VDC, 250 mA, iNspec Express Software



BOA Smart Camera

640x480 to 1600x200, Mono and Color CCD sensor, Pixel Size: 3.7µm to 7.4µm, C-Mount, IP67, Performance: 720 MHz to 1.2GHz dual core, Exposure Time: 22µs to 100ms, 10/100 BaseT, Ethernet/IP, PROFINET, FTP, Modbus, RS-232, -10-50°C Operating, Ultra small form factor 44 x 44 x 44 mm, 2 Inputs (1 Trigger, 1 general purpose/job select), 3 Outputs (2 general purpose, 1 dedicated strobe), 12-30 VDC via I/O or Ethernet, iNspec Express & Sherlock (BOA Pro) Software



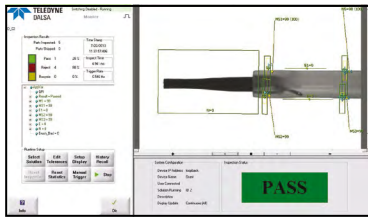
BOA2 Smart Camera

High-Res Global Shutter CMOS Sensor, with 2MP, 3MP and 5MP, IP67, C-Mount 2/3" & 1", 40-80 fps, Pixel Size: 5 µm, IP67, Gigabit Ethernet, Ethernet/IP, PROFINET, FTP, Modbus, RS-232, -10-50°C Operating, 83 mm x 66 mm x 48 mm (without lens cover), 3 opto-isolated inputs (including trigger), 3 Outputs (2 general purpose, 1 strobe), 24 VDC, 300mA, iNspec Express Software



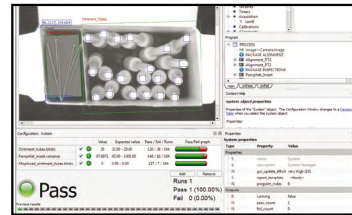
GEVA Vision System

Multi-Core Processors, Camera Flexibility, different sizes and performance models available, CPU: 1.8 GHz dual core to 3.2 GHz Gen3 Core i7, Program Capacity: 2 GB – 16 GB, 0 – 55 °C, 12-30V, 8 Input + 2 triggers, 8 Outputs + 2 strobes, VGA to QXGA, GigE, RS232, USB, Camera Link, DIN Rail, 200 x 120 x 80 mm to 277 x 89 x 194 mm, iNspec Express & Sherlock Software



iNspec Vision Software

Intuitive interface, uncompromising functionality and simple, flexible camera solutions, robust tools & communication, excellent factory integration—compatible with many standard protocols such as Modbus, ProfiNet, and Ethernet/IP.



Sherlock Vision Software

Advanced machine vision software interface, maximum of flexibility, rich suite of proven tools, powerful development interface, camera flexibility, robust tools & communication.

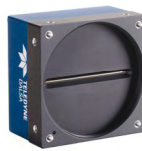
More Products



Frame Grabbers



Area Scan Cameras



Line Scan Cameras



IR Cameras and Cores
Compact, Shutterless Uncooled

