

# MACHINE VISION FOR Electronics Manufacturing

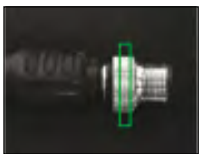
## Smart Cameras and Vision Systems from Teledyne DALSA

With the widest range of machine vision components in the industry, Teledyne DALSA serves a tremendous variety of applications in industrial settings and helps thousands of firms around the world find competitive advantage to succeed in their own widely varied industries.

### Your Benefit

Low Purchase & Operation Costs, High-Tech Products, Worldwide Availability, Leader in Machine Vision, Over 30 Years Expert Knowledge.

### Applications



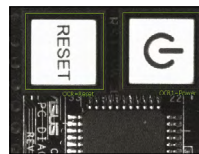
Measurement



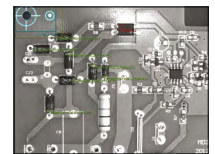
Location  
& Orientation



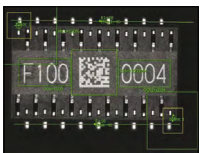
Print Inspection



Pattern Matching



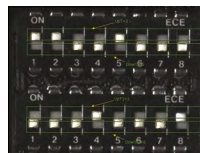
Component Location



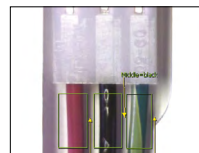
Component  
Inspection



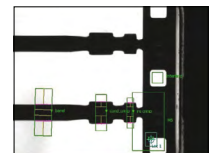
Orientation /  
Pick & Place



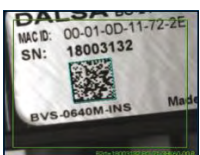
Switch Assembly



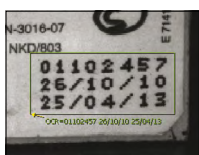
Cable Assembly



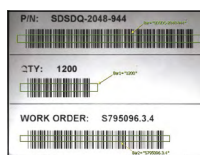
Connector Inspection



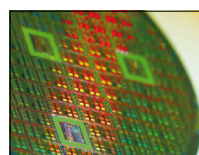
2D Code Reading



OCR



1D Barcode Reading



Semiconductor



Quality Inspection

# Products & Software



## BOA Spot Vision Sensor

640x480 to 1280x960, 1/3" Mono Global Shutter, CMOS, 640x480 also in color available, 30-45 fps, Pixel Size: 3.75 µm, M12 & C-Mount, IP67, Integrated Light, IP67, Gigabit Ethernet, Ethernet/IP, PROFINET, FTP, Modbus, RS-232, 0-50°C Operating, Dimensions: 61mm x 58mm x 57mm, 3 Inputs (1 Trigger, 2 general purpose/job select), 3 Outputs (general purpose), 12-30 VDC, 250 mA, iNspec Express Software



## BOA Smart Camera

640x480 to 1600x200, Mono and Color CCD sensor, Pixel Size: 3.7µm to 7.4µm, C-Mount, IP67, Performance: 720 MHz to 1.2GHz dual core, Exposure Time: 22µs to 1000ms, 10/100 BaseT, Ethernet/IP, PROFINET, FTP, Modbus, RS-232, -10-50°C Operating, Ultra small form factor 44 x 44 x 44 mm, 2 Inputs (1 Trigger, 1 general purpose/job select), 3 Outputs (2 general purpose, 1 dedicated strobe), 12-30 VDC via I/O or Ethernet, iNspec Express & Sherlock (BOA Pro) Software



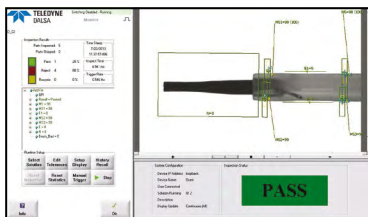
## BOA2 Smart Camera

High-Res Global Shutter CMOS Sensor, with 2MP, 3MP and 5MP, IP67, C-Mount 2/3" & 1", 40-80 fps, Pixel Size: 5 µm, IP67, Gigabit Ethernet, Ethernet/IP, PROFINET, FTP, Modbus, RS-232, -10-50°C Operating, 83 mm x 66 mm x 48 mm (without lens cover), 3 opto-isolated inputs (including trigger), 3 Outputs (2 general purpose, 1 strobe), 24 VDC, 300mA, iNspec Express Software



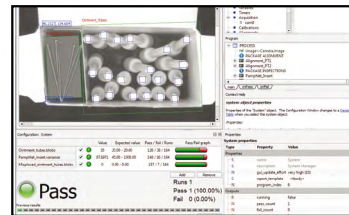
## GEVA Vision System

Multi-Core Processors, Camera Flexibility, different sizes and performance models available, CPU: 1.8 GHz dual core to 3.2 GHz Gen3 Core i7, Program Capacity: 2 GB – 16 GB, 0 – 55 °C, 12-30V, 8 Input + 2 triggers, 8 Outputs + 2 strobes, VGA to QXGA, GigE, RS232, USB, Camera Link, DIN Rail, 200 x 120 x 80 mm to 277 x 89 x 194 mm, iNspec Express & Sherlock Software



## iNspec Vision Software

Intuitive interface, uncompromising functionality and simple, flexible camera solutions, robust tools & communication, excellent factory integration—compatible with many standard protocols such as Modbus, ProfiNet, and Ethernet/IP.



## Sherlock Vision Software

Advanced machine vision software interface, maximum of flexibility, rich suite of proven tools, powerful development interface, camera flexibility, robust tools & communication.

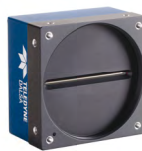
# More Products



Frame Grabbers



Area Scan Cameras



Line Scan Cameras



IR Cameras and Cores  
Compact, Shutterless Uncooled

